



Innovative New Method of Formaldehyde Measurement



Detachable Sensor Cartridge

FM-801

Formaldehyde Multimode Monitor

- Small colorimetric sensor cartridge, 43x17x4mm (1.7x0.7x0.16in), easy-to-use, reusable*, highly accurate for passive diffusion sampling.
- Portable base unit utilizes photoelectric photometry to read the absorbance change that HCHO induces in the sensor, then re-zeros between readings.
- Sensor cartridge itself can work as a stand-alone passive sampler.
- Base unit w/sensor inserted can operate as an on-site meter for short-term (30-minute) sampled measurement and/or for continuous monitoring/trend logging*.
- Base unit interfaces to GrayWolf's AdvancedSense™, DirectSense® and WolfPack™ for simultaneous display and logging of additional parameters (and for powerful annotation features).

Measurement Principle



Colorimetric reaction to exposure

Sensor element employs the chemical reaction between formaldehyde and β-diketone impregnated in a porous glass. The concentration of rustlike derivatives follows the sensor in proportion to the formaldehyde concentration and the duration of exposure. The difference of absorbance between samples is measured by radiating a constant wavelength light (absorptometric method) and then an algorithm converts to ppb or µg/m³ HCHO.

* Sensor reuse depends on HCHO exposure (~4 x 30 minute tests at 1ppm, ~150 tests at 30ppb, up to 1000 tests <10ppb HCHO)



FM-801

Formaldehyde Multimode Monitor

Specifications

Model Name	FM-801
Detection Principle	Photoelectric Absorptometric
Detection Range	<20ppb to 1,000 ppb, < 25 µg/m ³ to 1250 µg/m ³
Accuracy	±1-4ppb, <±0.2ppb, ±1-10% of reading >±0.2ppb
Resolution	1ppb
Concentration Units	ppb or µg/m ³
Display	Digital LCD
Sampling Method	Passive diffusion sampling
Operating Temp. and RH*	-10 to 40°C (14 to 104°F), 20 to 90 %RH <small>(per Commission)</small>
Sensor Shelf Life	1 year from mfg. date (stamped on pouch)
Memory (base unit)	up to 250 sensors and 4500 data points
Power Source	3 x AA size Alkaline batteries, or AC adapter
Standard Accessories	Sensor cartridge x 5 pcs, carrying case, USB connection cable, AA size batteries, WolfSense PC data transfer & reporting software



FM-801 (on optional ACC-801TC-1 bulk rig) shown connected to GrayWolf AdvancedSense™



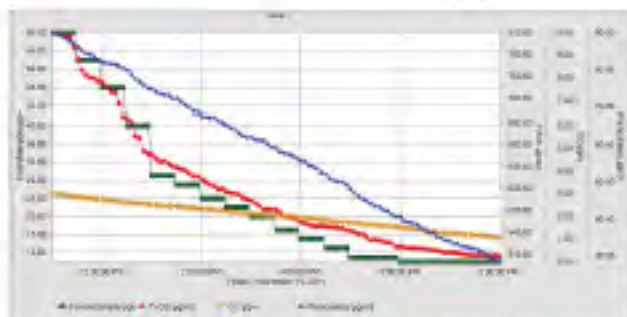
Display real-time (NGO) graph, attach testable notes and access many other powerful features when connected to AdvancedSense WolfHub or DirectSense WIN70 workstation/tablet.

Sensitivity to Interference Gas

	Concentration/ Exposure duration	FM-801 readout value (µg)
Benzene	2000 ppm / 0 h	0 (+10)
Toluene	2000 ppm / 0 h	0 (+10)
Xylene	2000 ppm / 0 h	0 (+10)
Ethylbenzene	2000 ppm / 0 h	0 (+10)
Methanol	2000 ppm / 0 h	0 (+10)
Ethanol	2000 ppm / 0 h	0 (+10)
1-Butanol	2000 ppm / 0 h	0 (+10)
2-Methyl-2-butanol	2000 ppm / 0 h	0 (+10)
Acetone	2000 ppm / 0 h	0 (+10)
2-Butanol	2000 ppm / 0 h	0 (+10)
Acetic Acid	2000 ppm / 0 h	0 (+10)
Isopropyl Alcohol	2000 ppm / 0 h	0 (+10)
Isopropanol	2000 ppm / 0 h	0 (+10)
alpha-pinene	2000 ppm / 0 h	0 (+10)
beta-pinene	2000 ppm / 0 h	0 (+10)
Chloroform	25 ppm / 5 h	69
Linoleic	100 ppm / 0 h	9 (+10)
Styrene	100 ppm / 0 h	12
Propylaldehyde	100 ppm / 0 h	13
n-Nonylaldehyde	100 ppm / 0 h	13
Benzaldehyde	100 ppm / 0 h	9 (+10)
Acetaldehyde	100 ppm / 0 h	21
Nitrogen Dioxide	1 ppm / 1h	42 (+10)
Ozone	1 ppm / 1h	56 (+10)
Sulfur Dioxide	1 ppm / 1h	3 (+10)

Provided with GrayWolf's versatile WolfSense™ PC data transfer and reporting software. Download readings stored on the FM-801 base unit when used at a stand-alone or when optionally connected to compatible GrayWolf platforms.

CE Compliant to CE Registered



Graph format/keys used log files on FM-801, singly or together with other parameters from any compatible GrayWolf platform.



Brandt Instruments, Inc.
18568 Oak Grove Pkwy
Prairieville, LA 70769
800-337-6291 / Phone: 225-673-6776 / Fax: 225-673-6725
www.brandtinst.com / e-mail: marketing@brandtinst.com